

THE **Galleria**
JOHNSTOWN

PARCELS AVAILABLE
Bob Varnier
LENSWOOD
COMMERCIAL REALTY, LLC.
814-942-6300

 John Murtha
Johnstown-Cambria
County Airport

JOHNSTOWN PA. (Richland Twp.)



25.0 Acre Commercial Site

Site

4.3

4.3 Acre Site

earth

**RICHLAND TOWNSHIP, CAMBRIA COUNTY
C2- GENERAL COMMERCIAL ZONING**

**FIREHOUSE
SUBS**
FOUNDED BY FIREMEN

OLLIE'S
Burgers
OUTLET

**8.35 ACRES
465' FRONTAGE**

Under
Agreement

**11.11 ACRES
940' FRONTAGE**

**Available
(Will Subdivide)**

**5.40 Acs.
Available
640' Frontage**

**RITE
AID**

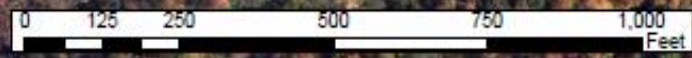
TO JOHNSTOWN

SCALP AVE.

TO WINDBER

4.3 Acs

FLC **H.F. LENZ
COMPANY**
1407 Scalp Avenue
Johnstown, PA 15904
Phone: 814-269-9300
FAX: 814-269-9301
www.hflenz.com
Engineers Planners Surveyors Energy Consultants



1609 & 1700 Scalp Ave. Johnstown Pa. - 20.0 +/- Acre Commercial Tract.

Recent Aerial
1609 & 1700 Scalp Ave. Johnstown Pa.
20.0 +/- Acres (will subdivide)



Under Agreement
8.35 Acs.
465' Front

11.0 Acs.
940' Frontage Available
(will Subdivide)

5.40 Acs.
640' Frontage

4.3 Acs



PARCELS AVAILABLE

Bob Varner
ENNSWOOD
COMMERCIAL REALTY, LLC.
814-942-6300

© 2016 Google

40°15'58.88" N 78

1993

PARCELS AVAILABLE
Bob Varner
LENSWOOD
COMMERCIAL REALTY, LLC.
814-942-6300

Under Contract

**1609 Scalp Ave. Johnstown Pa. -
16.0 +/- Acre Commercial Tract.
(1,600' Frontage / Scalp)**

**11.0 +/-
Acres
For Sale**

**5.40
Acres
for Sale**

**1700 Scalp Ave
4.3 Acre Site
400' Frontage**

4.3 Acre/Sale

Google Earth



700 ft

PARCELS AVAILABLE

Bob Varner
LENNSWOOD
COMMERCIAL REALTY, LLC.
814-942-6300

16.0 +/- Acres available in Yellow

CDM Parcels

DNS Parcel

1,600' of Frontage

ADT: 22,000



**400' Frontage
(4.3 Acres)**

Under Agreement





50-010-174-001



4.3 Acres at
signalized light

400' Frontage
(4.3 Acres)



ADP: 22,000

50-047-200-000

50-047-202-000

50-047-203-000

50-047-204-000

50-047-116-002

115

THEATRE DR

50-047-116-000

50-047-119-000

50-047-115-001

50-047-114-000

1724

1723 1/2

1723

50-047-171-119-000

130

130



ADT: 22,000



1700 Scalp Ave., Johnstown Pa.
4.3 Acre Commercial Site
Asking: \$240k

50-047
-200.000

4.3 Acres

1,999'

1,050'

2,181'

2,224'

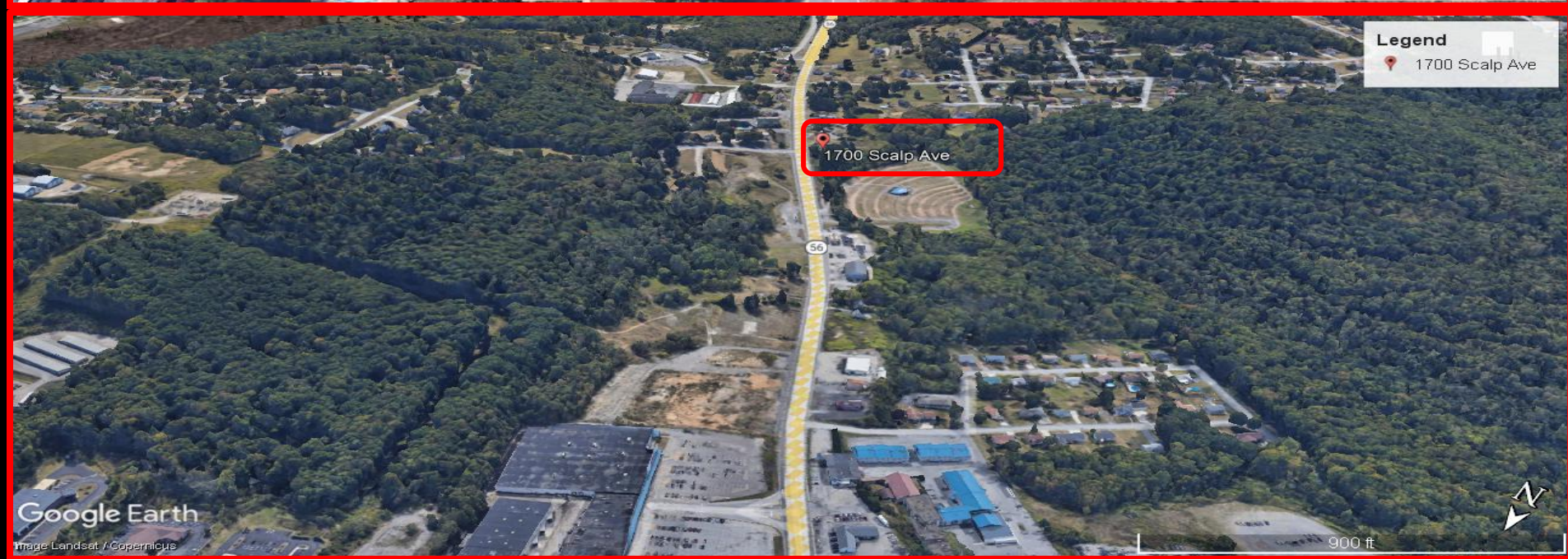
50-010
-174.001

50-04
-202.000

50-039
-200.000

50-047
-204.000





Legend

1700 Scalp Ave

400' Frontage
(4.3 Acres)

ADT: 22,000

Google Earth

©2022 Google

8.13 ft



Legend

1700 Scalp Ave

400' Frontage
(4.3 Acres)

ADT: 22,000

Google Earth

©2022 Google

8.35 ft



Legend
1700 Scalp Ave



Google Earth

© 2022 Google

10 ft



Legend
1700 Scalp Ave

Google Earth

© 2022 Google

10 ft

